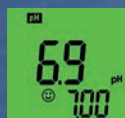
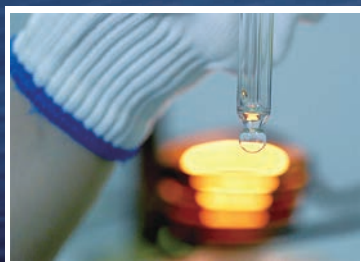


GS1 Premium pH Pen Tester



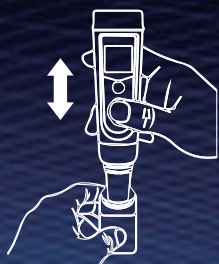
3-color large LCD screen

- White for measurement mode
- Green for calibration mode
- Red for calibration error



The replaceable pH probe is built with lithium glass membrane and blue gel electrolyte, ensuring high accuracy and fast response.

*Tips to quickly get a stable reading.



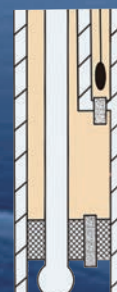
Before calibration, **shake the probe vertically** for a few seconds in the calibration bottle.



When measuring, make a **quick stir** in the solution before taking the reading..



Simplest design allows you to complete 2-point calibration within 30 seconds to keep the highest accuracy.





Double-junction structure significantly increases durability of the probe

Lab-Grade Instruments Designed Specifically for Growers



Technical Specs

Range	0.0 to 14.0 pH, 0 to 50°C (32 to 122°F)
Resolution	0.1 pH, 0.1°F/0.1°C
Accuracy	±0.1 pH, ±1°C/±1°F
Temperature Compensation	Automatic
pH Calibration	Automatic 1 to 3 points (7/4/10) *pH 10.01 solution sold separately
Unit	pH, °F, °C
Power supply	4-AAA alkaline batteries
Backlight	White (measurement); Green (calibration); Red (errors)
Reading hold	Manual
Warranty	Two years for the instrument, one year for the probe
pH probe	Low-resistance lithium glass membrane, double-junction, blue gel electrolyte
Successful calibration indicators	M (7.00 pH), L (4.00 pH), H (10.01 pH)
Low battery reminder	
Waterproof rating	IP67
Reading stabilization icon	

What's in the box

